

*places to learn.*



**PLACES**  
**SPACES**

*spaces  
to park.*



# PLACES

*One Mission. One Vision. One Community.*

We are **Surrey Christian School**. ■ Since the doors of Surrey Christian School opened, we have built an amazing legacy of service and community. Throughout the years, we have come together around our mission of educating for wholeness by inviting our students into God's Story and ensuring they flourish as they discover what it means to follow Jesus. ■ Our previous Keeping Promises campaign helped us build a beautiful and award-winning building to house our primary students at the Fleetwood Campus. We are grateful for the significant growth we have seen in recent years. While student safety is always our number one priority, this significant growth has limited us in what we can do to enhance student learning at the campus. As we desire to keep the promises alive that were made by previous generations by creating new places to learn and spaces to park, we call upon our entire SCS community to pull together and collectively support and contribute to the completion of our Fleetwood Campus.

*This is our **Places Spaces** campaign.*

# SPACES







# PLACES

**MISSION** Educating for wholeness by engaging God's world in the servant way of Jesus

**VISION** Becoming fully alive in God's story

**OUR COMMUNITY** Ethnically and denominationally diverse we come together with a common passion: to immerse our children in a deep understanding of The Story of God and their role in that story. We want our children to become people formed by The Story and carriers of the redeeming love of God to all parts of His world.

**OUR PROGRAM** We plan formational learning experiences that are embedded in a Biblical understanding of God's world and our place in it. We strive to do this in the classroom, the hallway, the gymnasium, the playground, in our field work and in our interactions with other schools and community members. Our work is to ensure that *all* of what we do at SCS further enhances our mission of educating for wholeness.

**OUR STUDENTS** Made in God's image and loved beyond measure, they are challenged to understand and develop a sense of who they are and how their unique gifts and abilities fit into their service to the people and places of God's world.

**OUR STAFF** Our teachers and support staff are caring, thoughtful and loving people of the The Story and work to facilitate growth in our students by designing learning that challenges, nurtures, and shapes students towards understanding how to follow Jesus in the twenty-first century.

# SPACES

# PLA

- **additional classroom space**
- **a multi-purpose space**
- **student and staff washrooms**
- **administration offices / staff room**



## PLACES

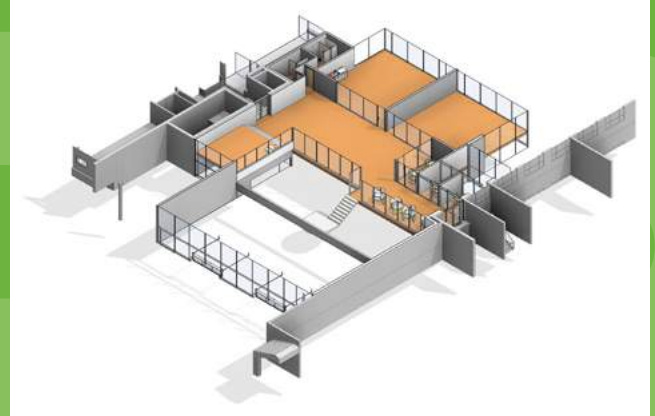
We are deeply grateful to those in our community who donated generously in the past to build our current facilities; however we have clearly outgrown our Fleetwood Campus. The hallways are crowded; the gymnasium is over-booked; our staffroom is currently in the hallway; and our administration offices are temporarily located in a residential house. It is abundantly clear that ***we need to build!***

## NEW PLACES

Our hope is to join the primary and intermediate buildings with a structure that completes the Fleetwood Campus and includes: additional classroom space, a multi-purpose space, student and staff washrooms, administration offices, and a staff room.



Lower floor showcasing the main entrance to the school, multi-purpose space, administration offices and staff room



Upper floor showcasing the multi-purpose space, classrooms, and learning spaces



New main entrance to the school and front courtyard

# SPPA

- **increased number of parking spaces**
- **improved safety and efficiency of bus loop**
- **safer and enhanced pick-up & drop-off zones**
- **traffic loop with separate entrance and exit**

## **SPACES**

One of our biggest student safety concerns at SCS focuses on the parking situation at our Fleetwood Campus. Currently our lot is under-sized and minimally functional. For many parents, pick-up and drop-off are an exercise in frustration.

***We need to fix this!***

## **NEW SPACES**

Our hope is to increase the number of parking spots, improve the safety and efficiency of the bus loop, create more, safer and enhanced pick-up and drop-off zones, and develop a traffic loop with a separate entrance and exit.

# SPDA



New parking lot with drop off/pick zones, bus loop and separate entrance and exit ways



# PLACES

**PROJECT COSTS** Our total project cost is approximately seven million dollars. However, our plan is to complete the project in phases as funds allow:

Phase 1 — *develop completely new parking lot and bus loop*

Phase 2 — *join the primary and intermediate buildings with two classrooms, multipurpose room, staff room, administration offices, additional bathrooms/work rooms*

**PROJECT FINANCING** We are planning to finance up to a maximum of \$3 million\* and to fundraise the remaining.

**REQUESTED CREDIT FACILITIES** We have a strong history of working with both the CRC Extension Fund as well as local banks and will continue those relationships based on the best rates we can negotiate.

**WHAT ABOUT TUITION?** We are not planning on raising tuition to cover the costs of this project. If we were to do that the raise in tuition would be exorbitant and unsustainable by the majority of our families. However, please know that a portion of everyone's tuition goes towards servicing the debt. That is why we need everyone to participate in the capital campaign and keep debt servicing to a minimum.

\*Note – this number is based on financial status as of winter 2018-2019. Our expectation is that as our debt continues to decline based on aggressive principal repayment we will be able to increase our financing limit.

# SPACES



## PLACES & SPACES PLEDGE FORM

### DONOR INFORMATION

NAME

ADDRESS

CITY PROVINCE

POSTAL CODE TELEPHONE

EMAIL

### PAYMENT INFORMATION

I plan to make this donation by:

- cash  cheque  pre-authorized debit  
 credit card

NAME ON CARD

CARD #

EXPIRATION CVS

Note: Tax receipts will be issued for all funds donated up until December 31 of each year. The campaign committee will respect the confidentiality of everyone who donates.

### PLEDGE INFORMATION

I pledge a total of \$\_\_\_\_\_ to be paid:

- immediate gift on \_\_\_ | \_\_\_ | \_\_\_ (mm/dd/yyyy)  
 monthly, for \_\_\_\_\_ months, beginning  
\_\_\_ | \_\_\_ | \_\_\_ (mm/dd/yyyy)  
 annually, to be paid in three annual payments of:  
\$\_\_\_\_\_ on \_\_\_ | \_\_\_ | \_\_\_ (mm/dd/yyyy)  
\$\_\_\_\_\_ on \_\_\_ | \_\_\_ | \_\_\_ (mm/dd/yyyy)  
\$\_\_\_\_\_ on \_\_\_ | \_\_\_ | \_\_\_ (mm/dd/yyyy)

### ACKNOWLEDGEMENT INFORMATION

- please use the following name in all acknowledgements:

- I wish to have our donation remain anonymous.

AUTHORIZED SIGNATURE

DATE

number of gifts	dollar amount	monthly for 36 months	annually for three years	total raised
1	<b>\$300,000</b>	\$8,333.33	\$100,000	\$300,000
2	<b>\$150,000</b>	\$4,166.67	\$50,000	\$300,000
3	<b>\$100,000</b>	\$2,777.78	\$33,333	\$300,000
4	<b>\$50,000</b>	\$1,388.89	\$16,667	\$200,000
5	<b>\$72,000</b>	\$2,000.00	\$24,000	\$360,000
6	<b>\$36,000</b>	\$1,000.00	\$12,000	\$216,000
7	<b>\$18,000</b>	\$500.00	\$6,000	\$126,000
10	<b>\$10,800</b>	\$300.00	\$3,600	\$108,000
11	<b>\$9,000</b>	\$250.00	\$3,000	\$99,000
14	<b>\$7,200</b>	\$200.00	\$2,400	\$100,800
30	<b>\$5,400</b>	\$150.00	\$1,800	\$162,000
60	<b>\$3,600</b>	\$100.00	\$1,200	\$216,000
80	<b>\$2,520</b>	\$70.00	\$840	\$201,600
100	<b>\$1,440</b>	\$40.00	\$480	\$144,000
119	<b>\$900</b>			\$107,100
130	<b>\$300</b>			\$39,000
130	<b>\$100</b>			\$13,000
150	<b>\$50</b>			\$7,500
<b>862</b>				<b>\$3,000,000</b>

The purpose of this capital campaign is to raise **\$3 million**.

Our goal is that every single person in the SCS community will donate something.

Please prayerfully consider your part!

*One generation shall praise Your works to another, and shall declare Your mighty acts.*

Psalm 145:4

NEW KING JAMES VERSION







SURREY CHRISTIAN SCHOOL

[surreychristian.com](http://surreychristian.com)